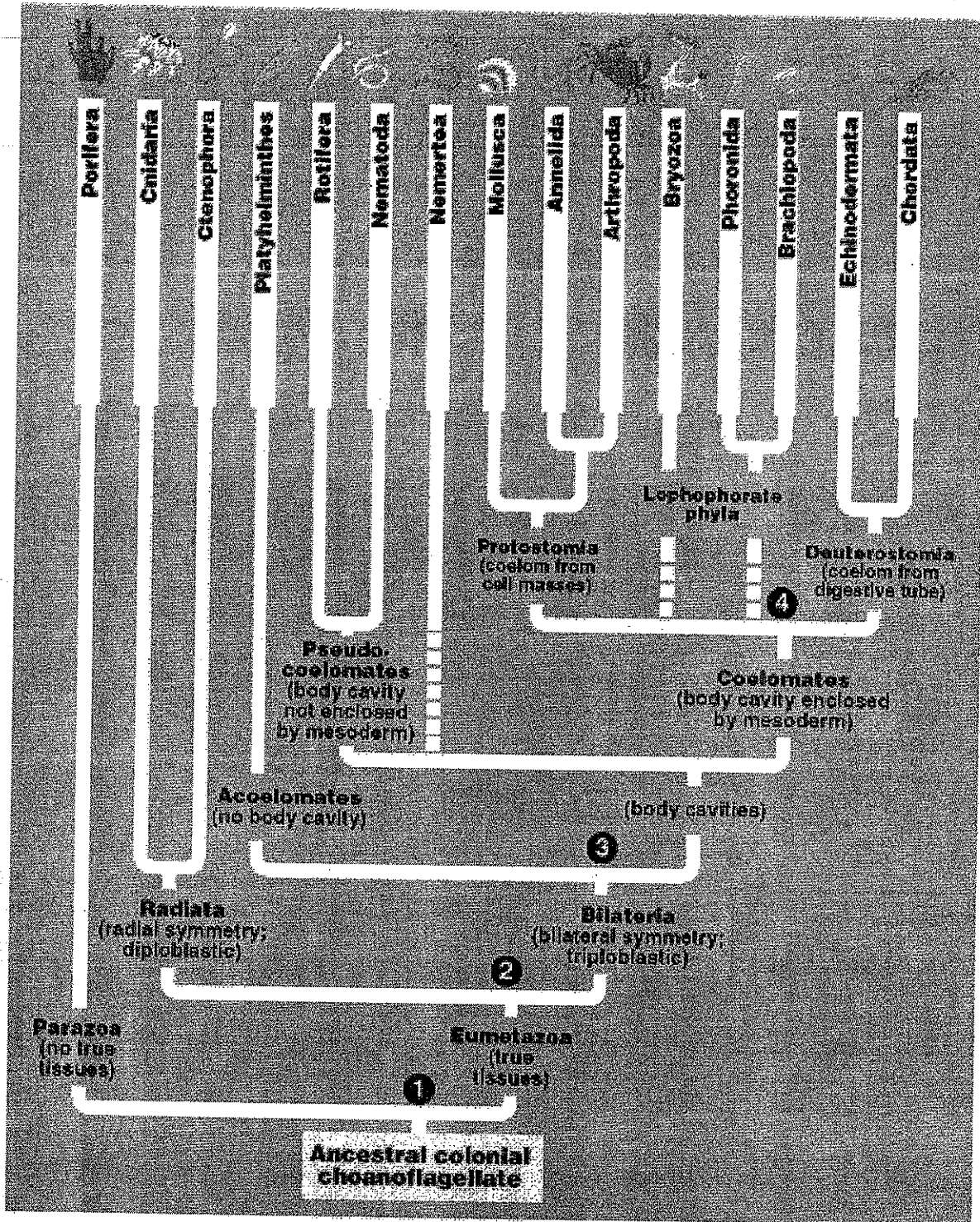
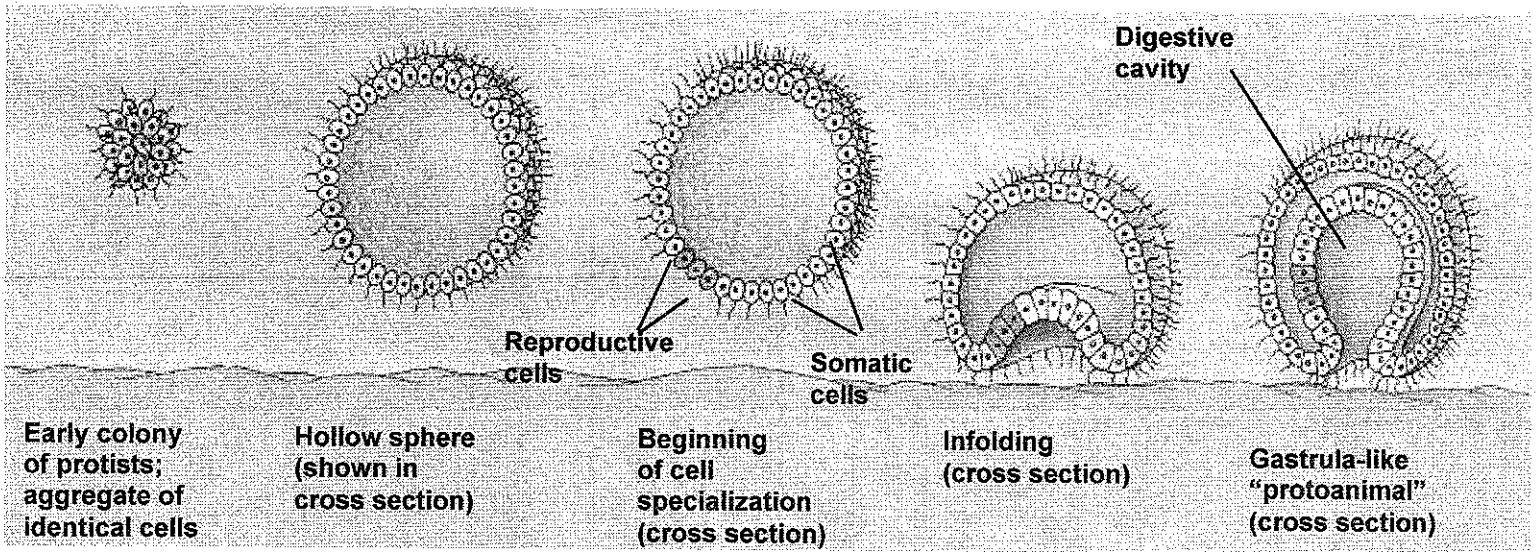


OVERVIEW OF ANIMAL PHYLOGENY (tree based on body plans)

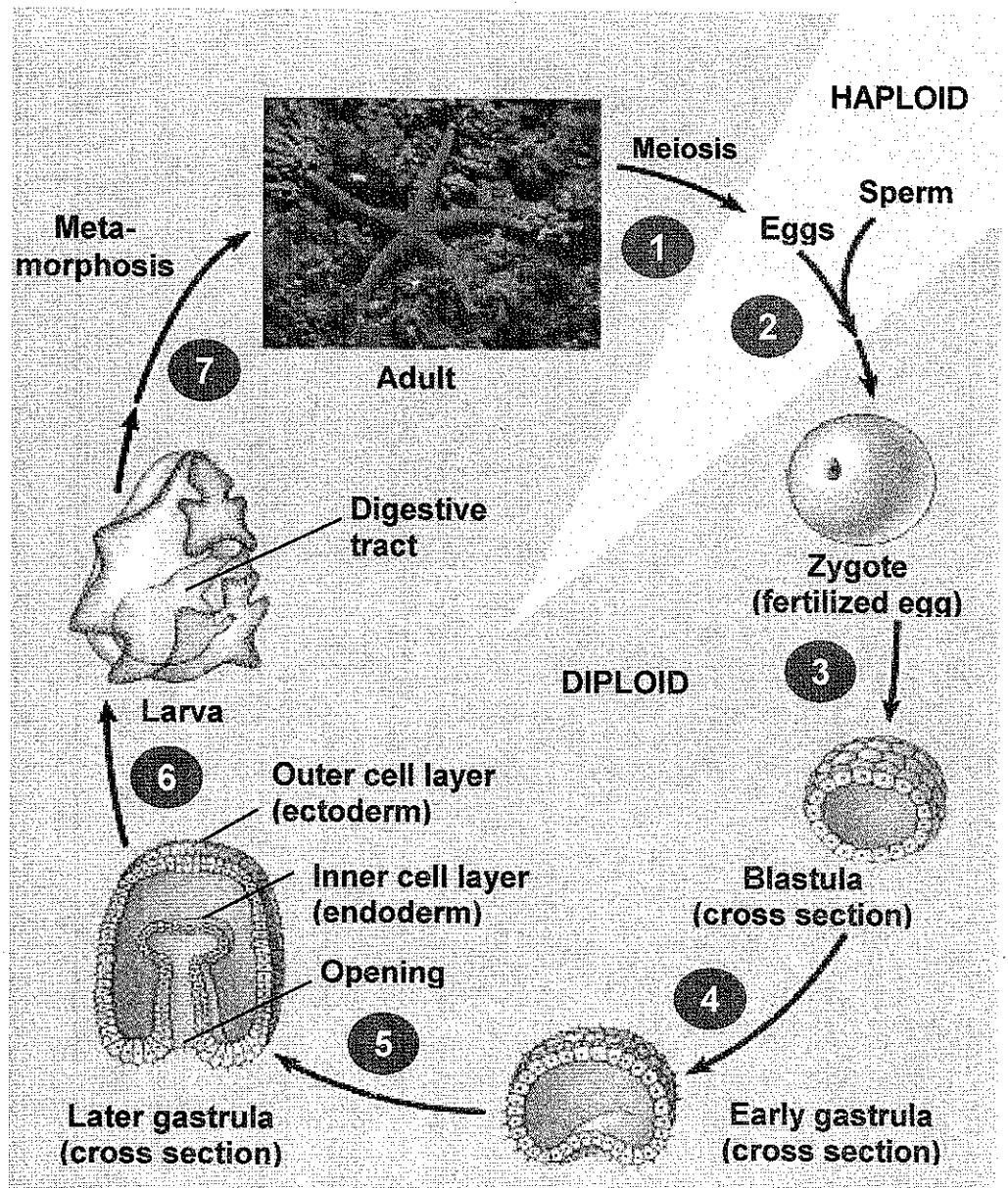
Major transitions

1. Tissue formation
2. Radial symmetry vs. bilateral symmetry
3. Body cavity forming
4. Coelem (body cavity) development



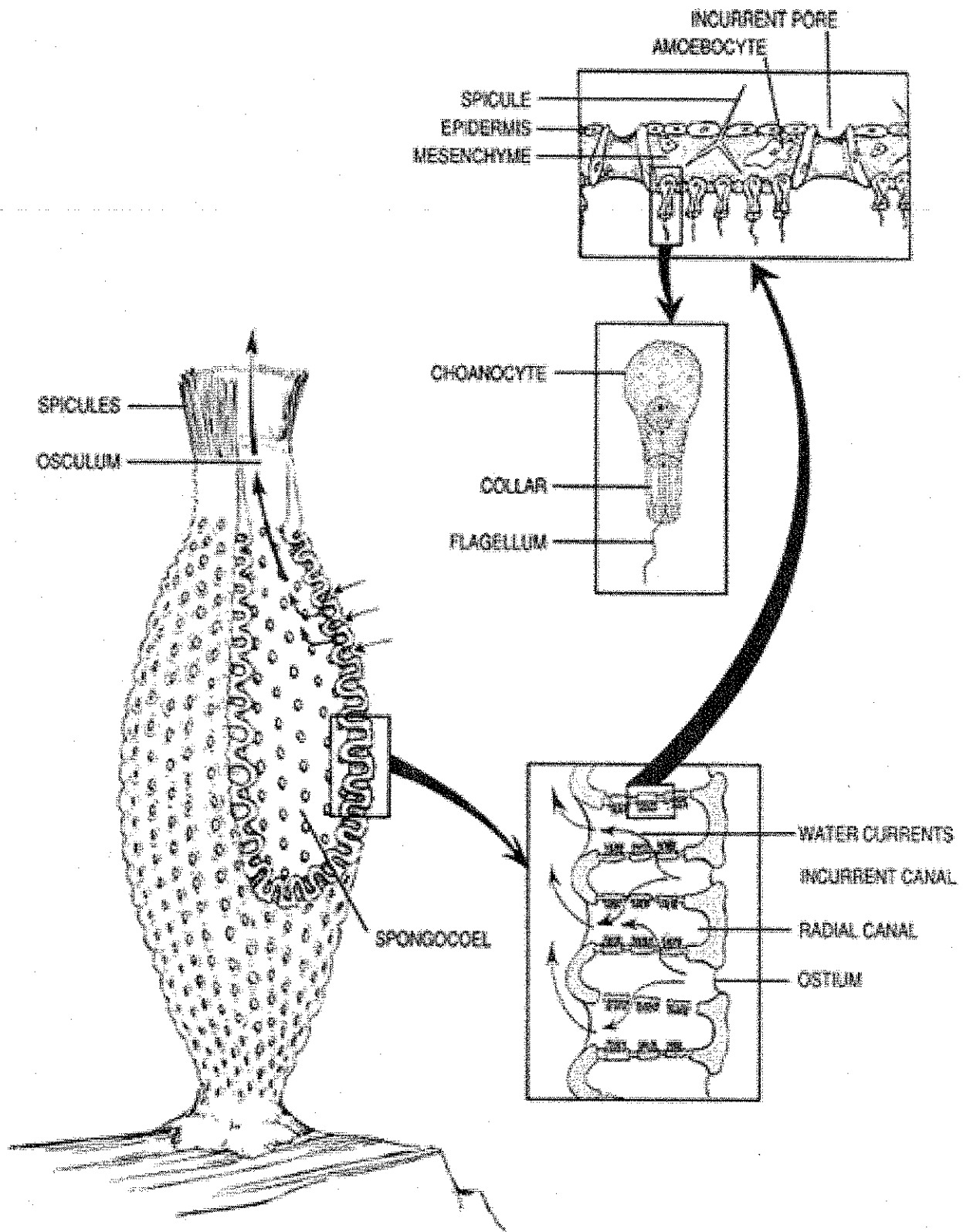


One hypothesis for the origin of animals from a flagellated protist. From: Campbell, N.A., Reece, J.B., and L.G. Mitchell. 1999. Biology. 5<sup>th</sup> ed. Benjamin Cummings: Menlo Park



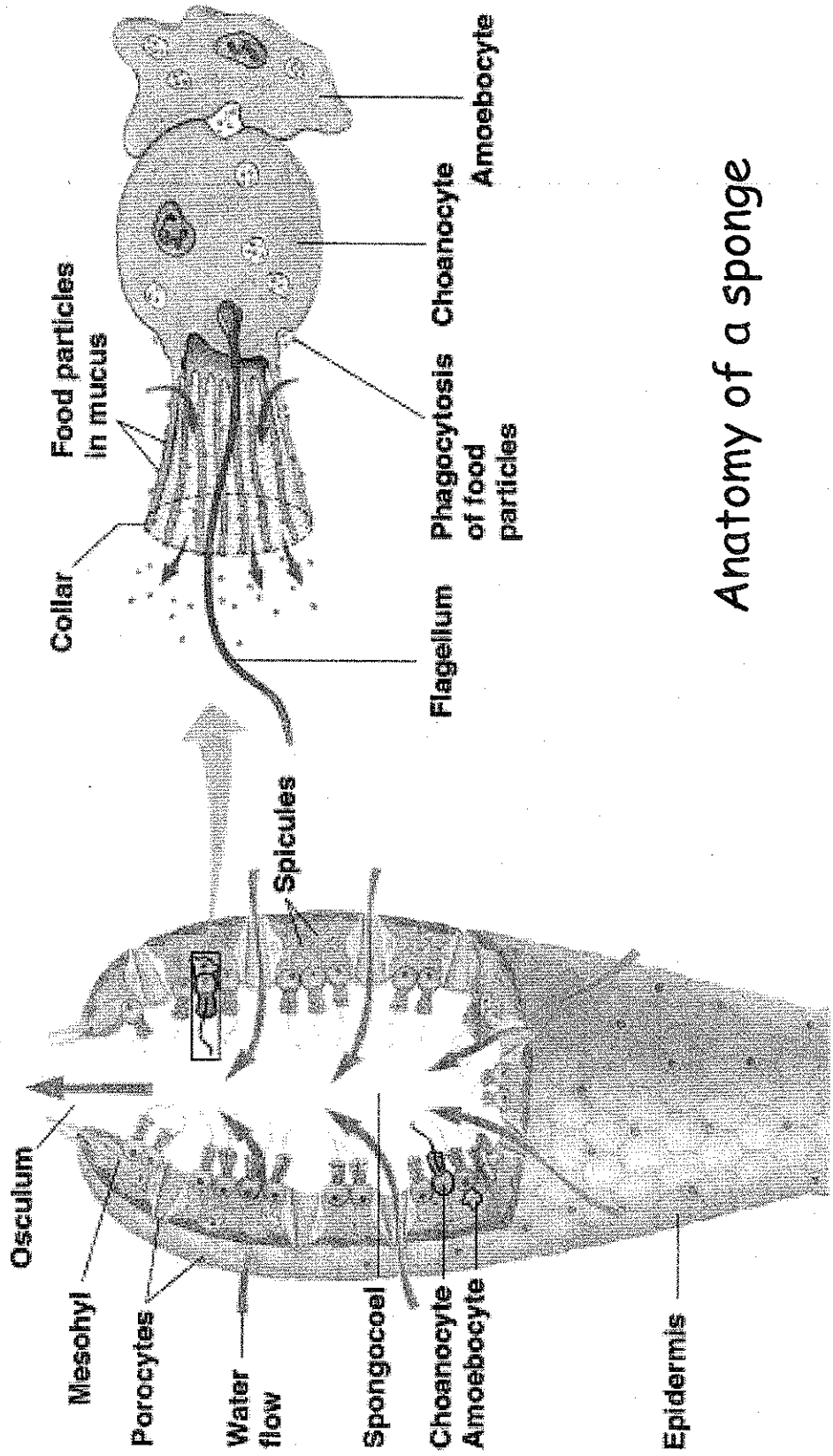
Lifecycle of a seastar.

From: Campbell, N.A., Reece, J.B., and L.G. Mitchell. 1999. Biology. 5<sup>th</sup> ed. Benjamin Cummings: Menlo Park



© Pearson Custom Publishing

SIMPLE SPONGE APPEARANCE, GRANTIA



# Anatomy of a sponge