

Vancouver Community College
Biology 1120
Instructor Maria Morlin

January 2021 – hybrid course

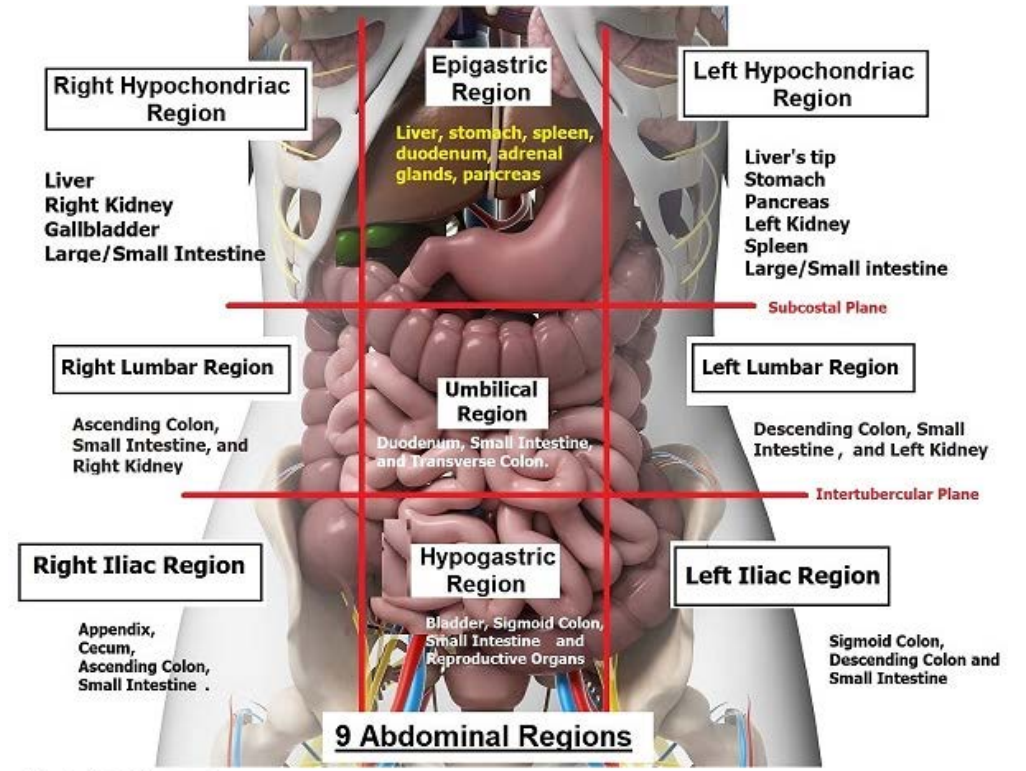
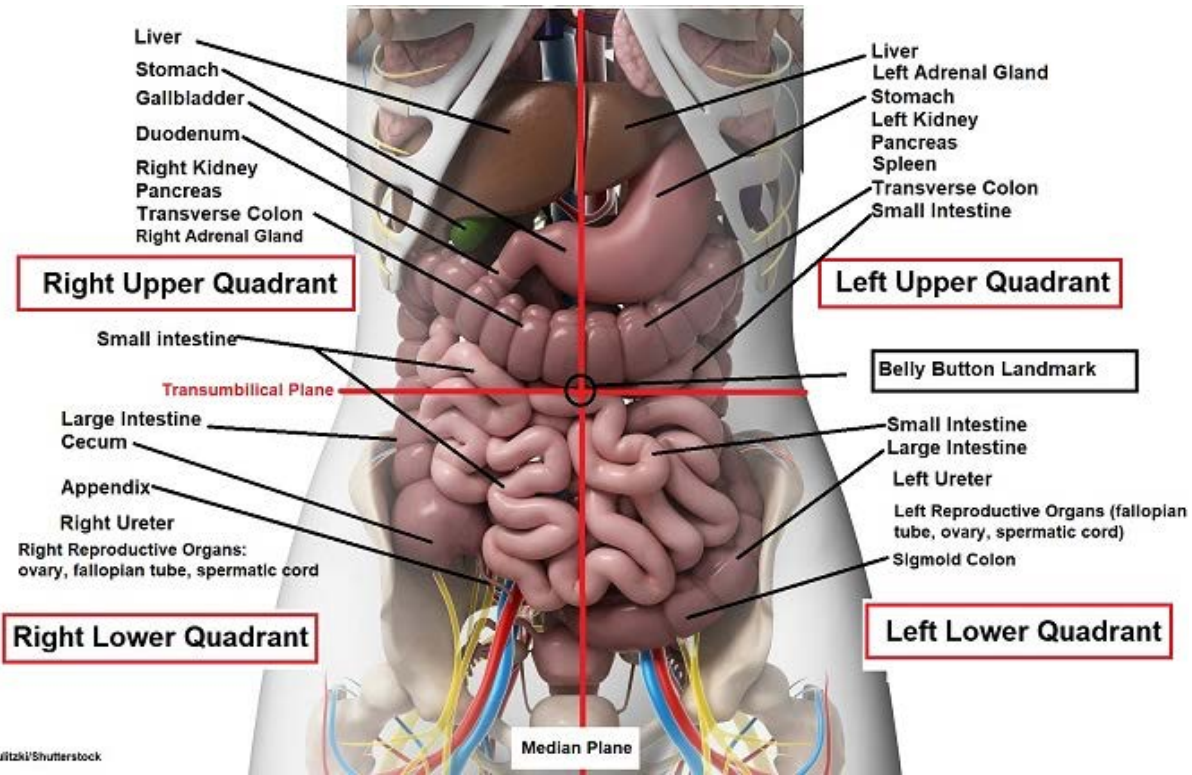
Lab: Orientation

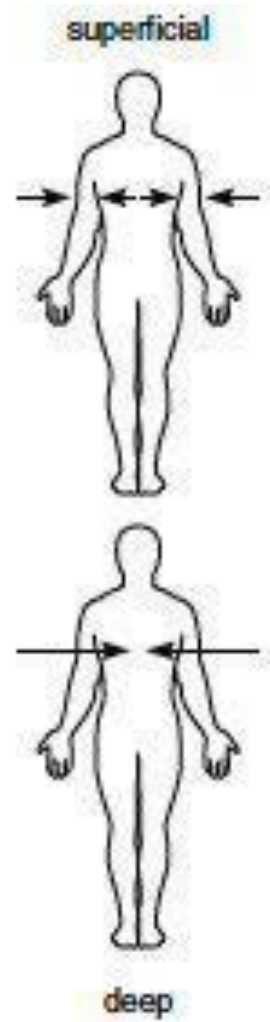
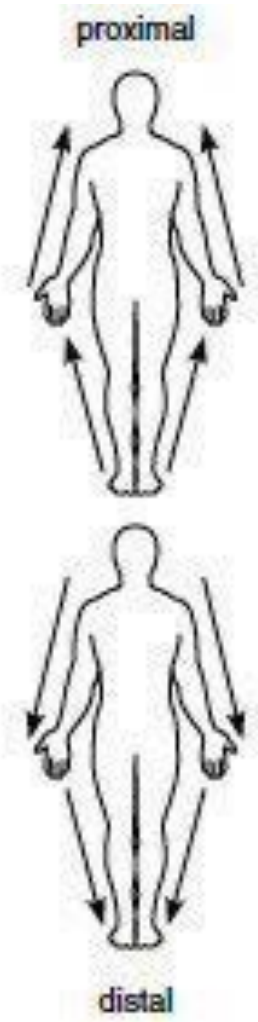
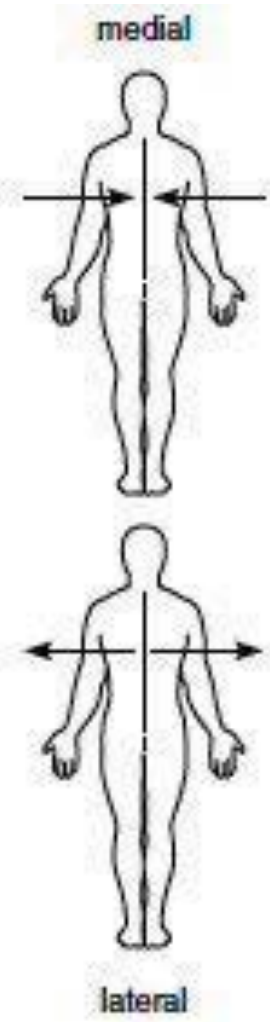
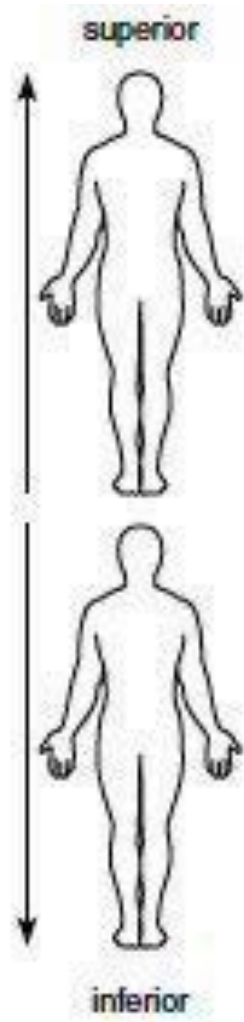
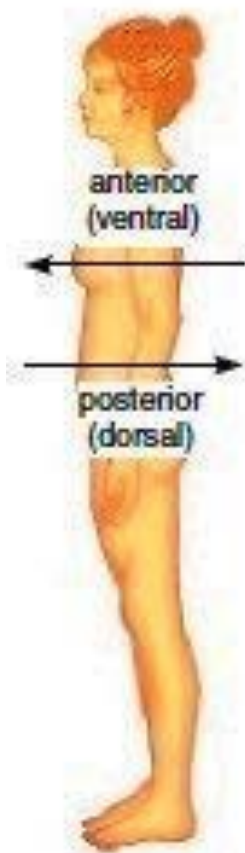
Outline

- Objectives
- Human model images
 - Quadrants and regions
 - Directional terms
 - Anatomical planes
 - Cavities and contents
- Resources to review anatomical terminology and descriptions.

Objectives

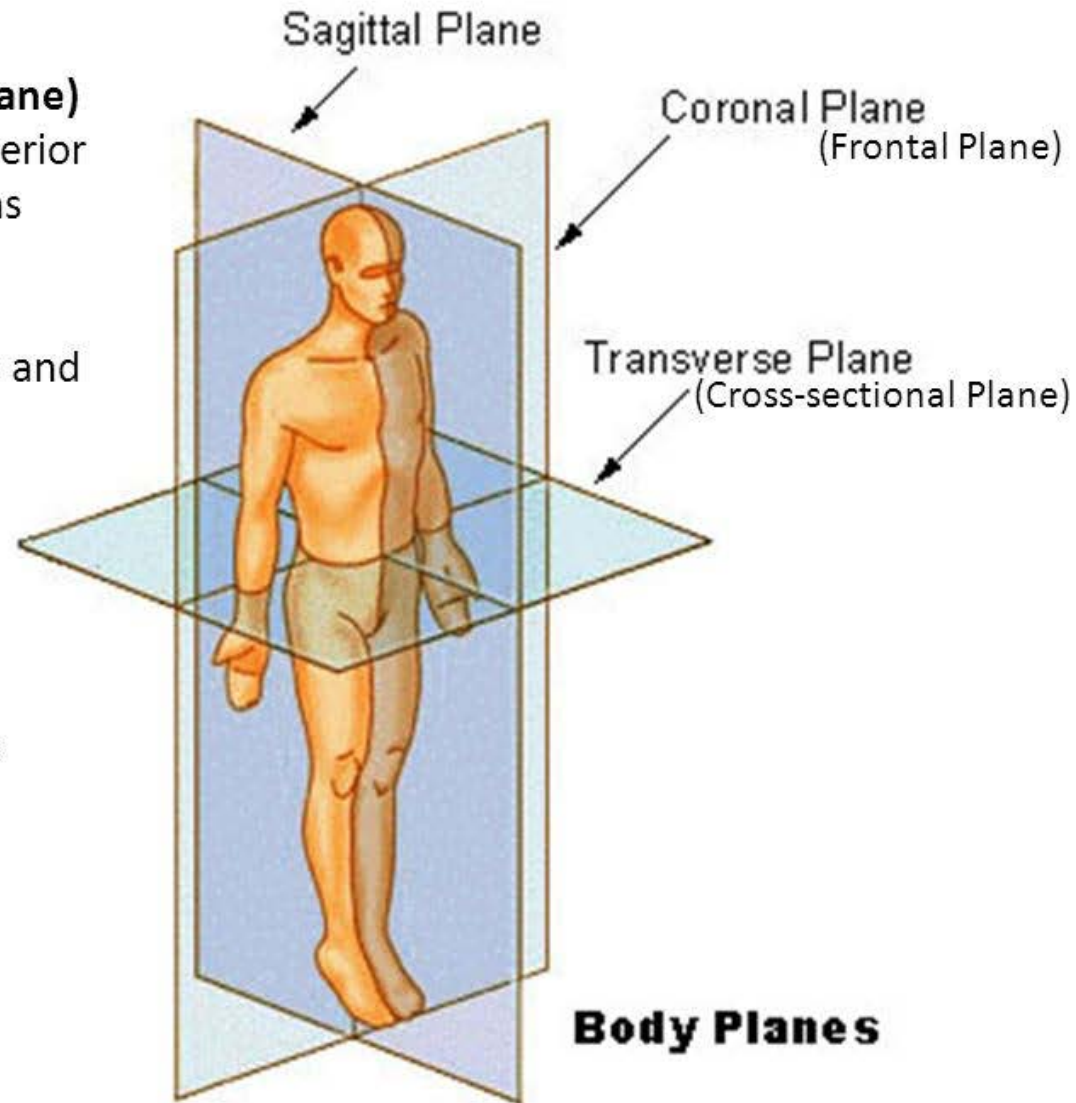
1. Learn and apply anatomical directional terms.
2. Identify anatomical planes of the body.
3. Identify quadrants and regions and organs within them.
4. Learn and apply dental terminology

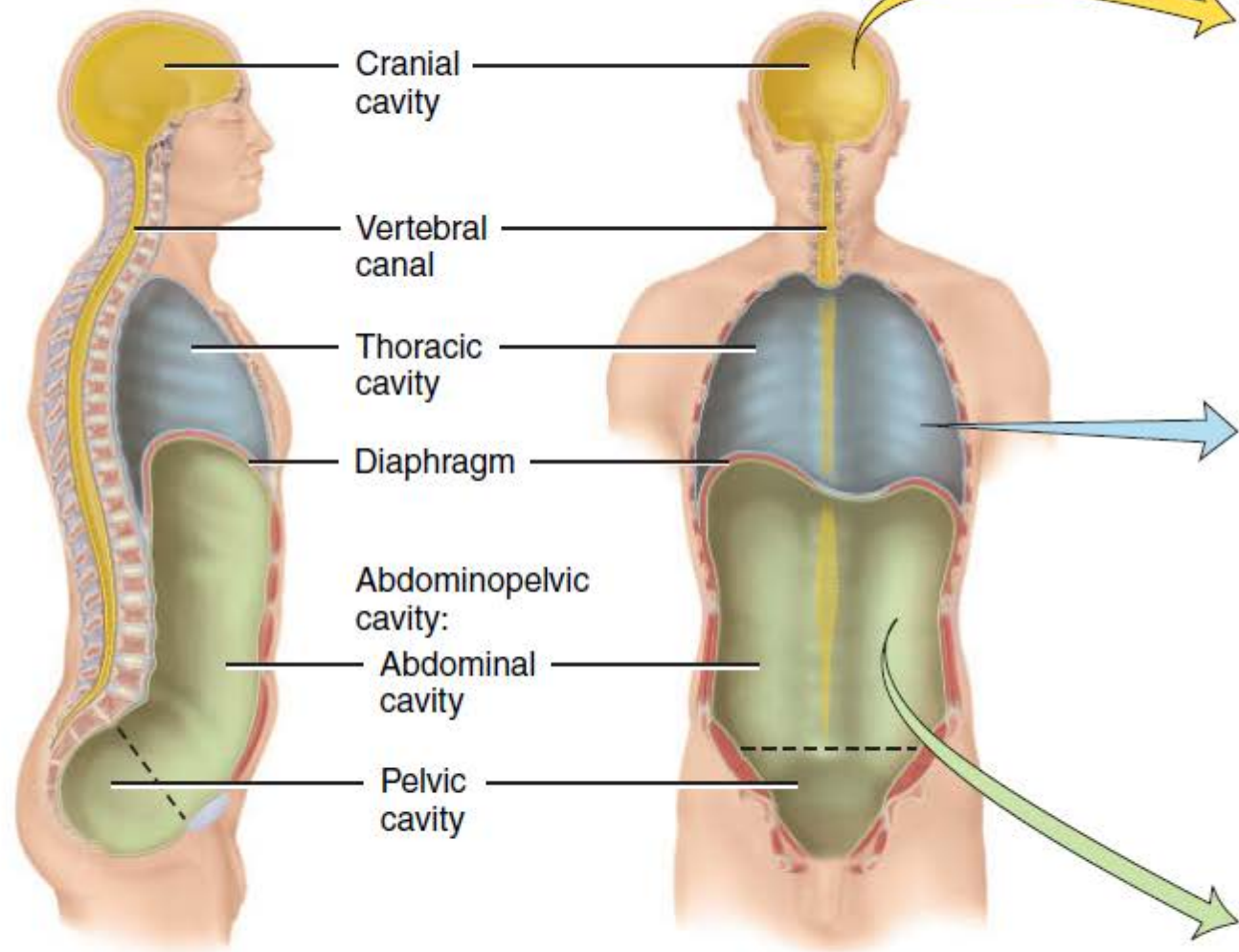




Planes of Reference

- **Coronal Plane (Frontal Plane)**
 - Divides body into anterior and posterior portions
- **Sagittal Plane**
 - Divides body into left and right portions
 - Midsagittal Plane
 - Parasagittal Plane
- **Transverse Plane (Cross-sectional Plane)**
 - Divides the body into superior and inferior portions





(a) Right lateral view

(b) Anterior view

CAVITY	COMMENTS
Cranial cavity	Formed by cranial bones and contains brain.
Vertebral canal	Formed by vertebral column and contains spinal cord and the beginnings of spinal nerves.
Thoracic cavity*	Chest cavity; contains pleural and pericardial cavities and the mediastinum.
<i>Pleural cavity</i>	A potential space between the layers of the pleura that surrounds a lung.
<i>Pericardial cavity</i>	A potential space between the layers of the pericardium that surrounds the heart.
<i>Mediastinum</i>	Central portion of thoracic cavity between the lungs; extends from sternum to vertebral column and from first rib to diaphragm; contains heart, thymus, esophagus, trachea, and several large blood vessels.
Abdominopelvic cavity	Subdivided into abdominal and pelvic cavities.
<i>Abdominal cavity</i>	Contains stomach, spleen, liver, gallbladder, small intestine, and most of large intestine; the serous membrane of the abdominal cavity is the peritoneum.
<i>Pelvic cavity</i>	Contains urinary bladder, portions of large intestine, and internal organs of reproduction.

Resources

- Anatomical position, directional terms, body planes
 - <https://www.youtube.com/watch?v=u7WXfp35FWk>
- Anatomical terminology regions and quadrants:
 - <https://www.youtube.com/watch?v=oeFoxTi02yg>
- Labelling exercise:
 - <https://www.purposegames.com/game/abdominopelvic-regions-quiz-game>