

# Class Arachnida

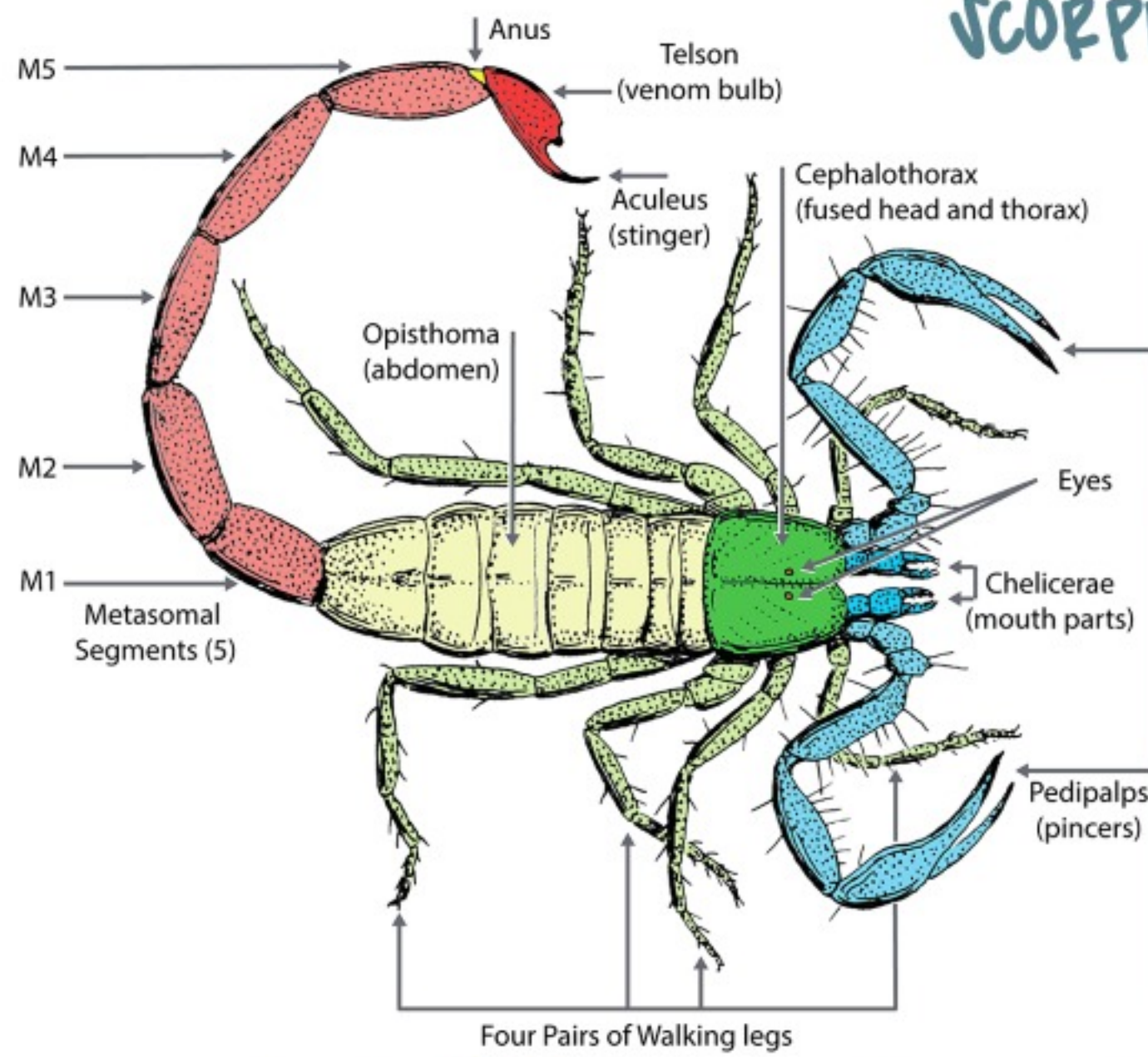
September 26, 2022

4:21 PM

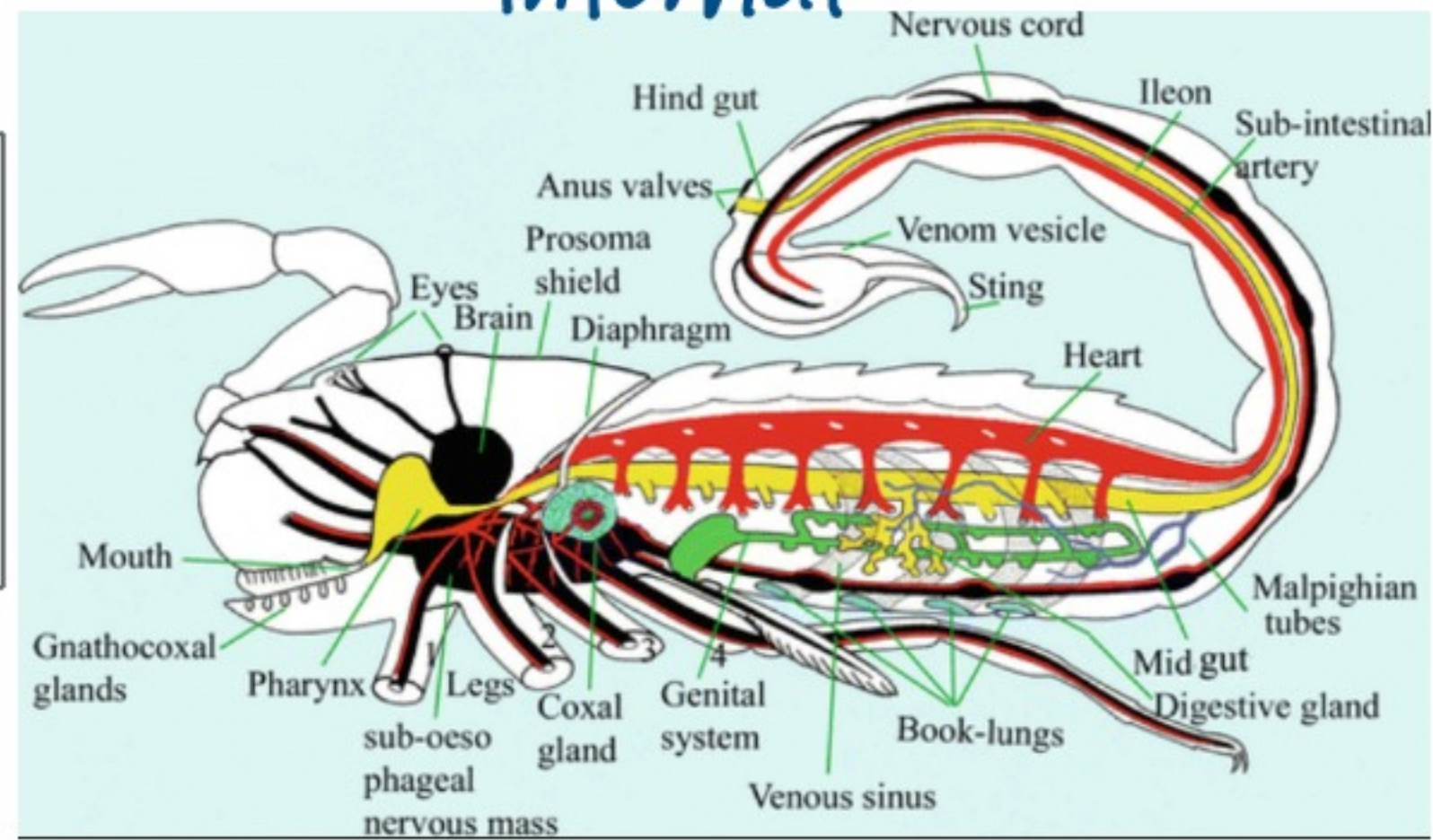
## BODY PLAN

external

SCORPION

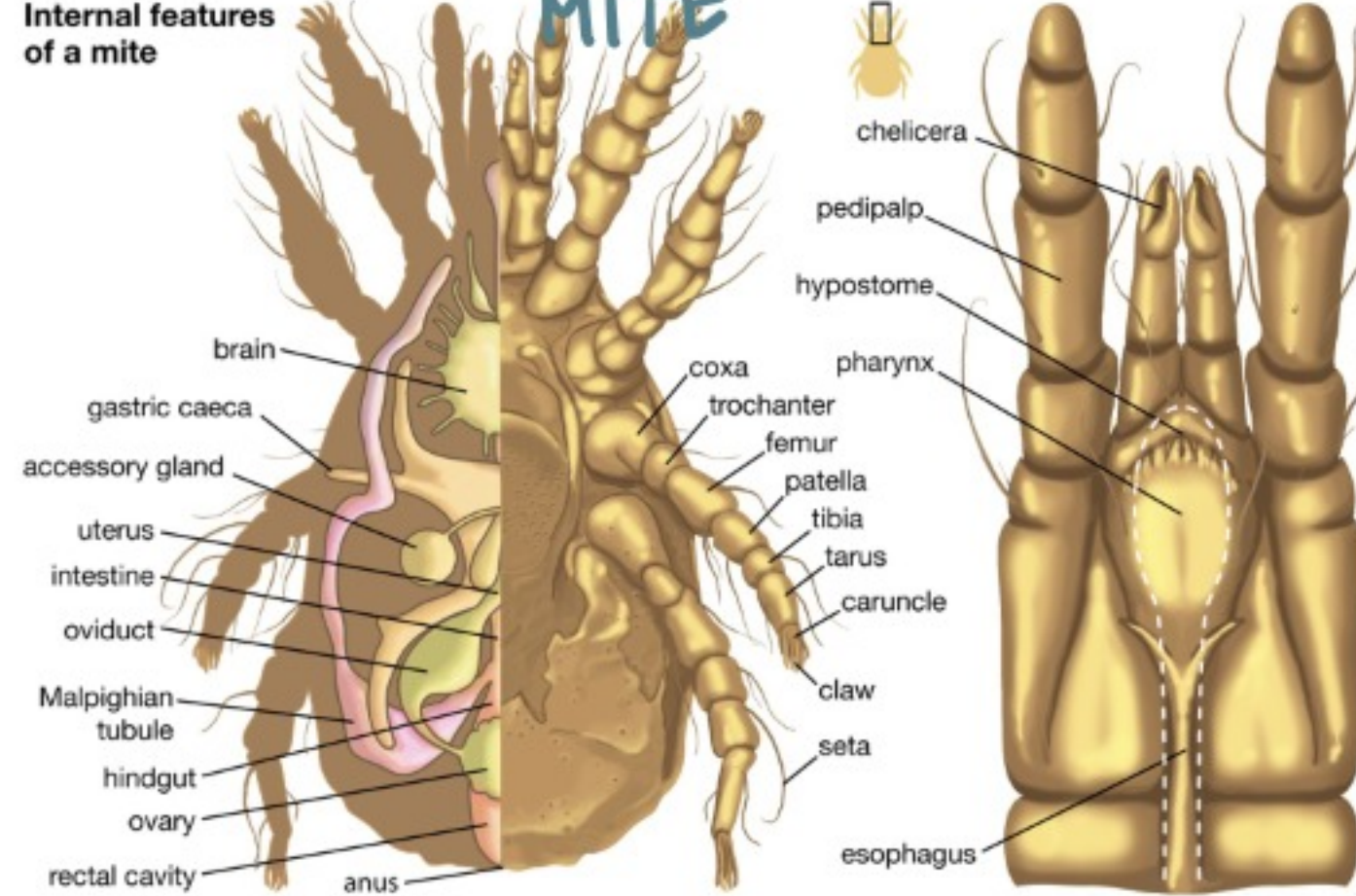


internal

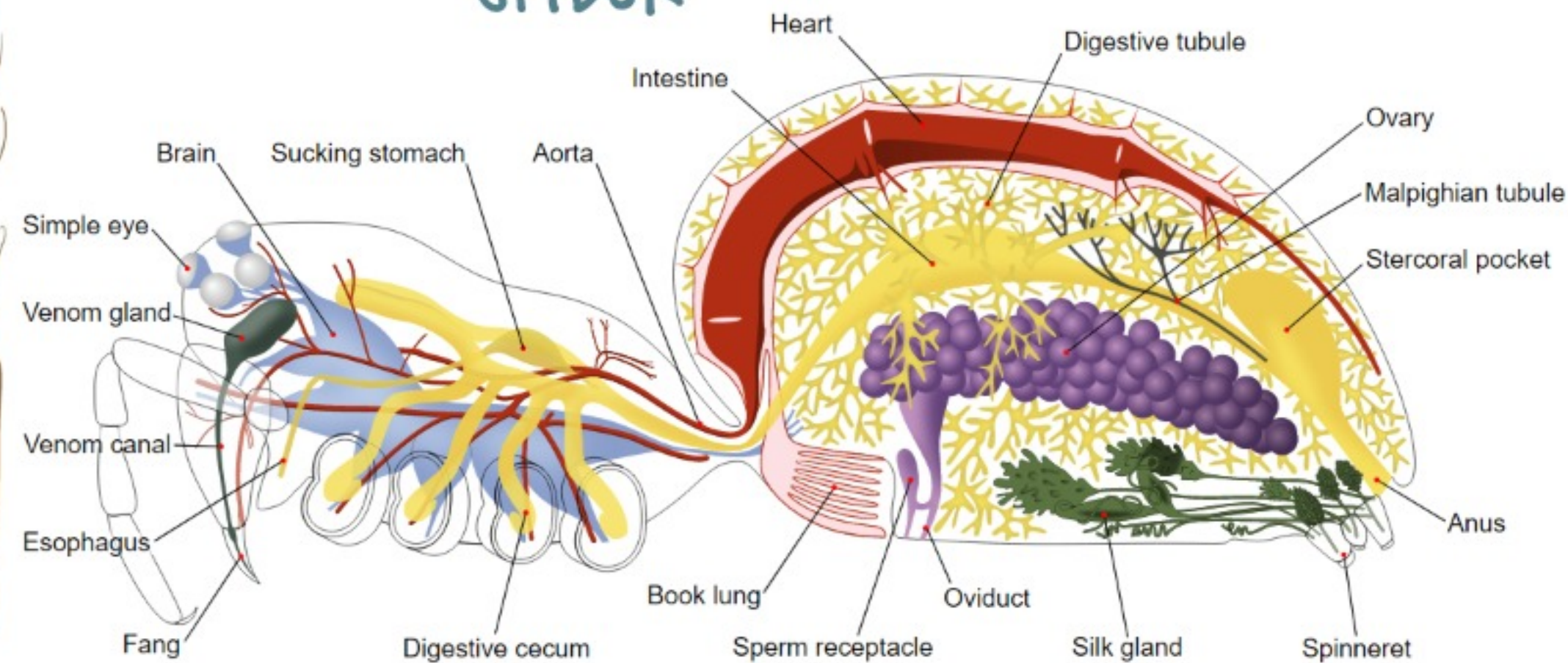


Internal features of a mite

MITE



SPIDER



- In the world, there are approximately 65,000 species
  - o 8,000 of which are located in North America
- Spiders, daddy long legs, false scorpions, mites and ticks are found all over the world  
Scorpions, sun spiders, tailless whip scorpions, and micro whip scorpions are found within the tropical and subtropical areas of the world
- Of Class Arachnida, Ticks and Mites are the most abundant
  - o They can be found in soil, fresh and marine waters, and are also parasitic to animals
- Most can only eat liquid food
  - o Squirt digestive chemicals into their prey and suck out the juice
- Predators to insects and other invertebrates (except for mites)
- Mites feed on various things; fungus, plants, dead animals, bacteria, etc.
- Males can draw sperm into their pedipalps (this process is called **sperm induction**)
- Like many other animals, each species of arachnids have differing types of mating behaviours
  - o Orb weaver males tend to pat and stroke the female as they approach
  - o Male wolf spiders and jumping spiders wave their pedipalps
  - o Others provide offerings of a meal, such as the *nursery-web spider*, which wraps a fly in silk for the female to eat prior to mating
- Sperm goes into the female genital structure (the epigynum), where they begin their journey towards the oviducts and out the gonopore